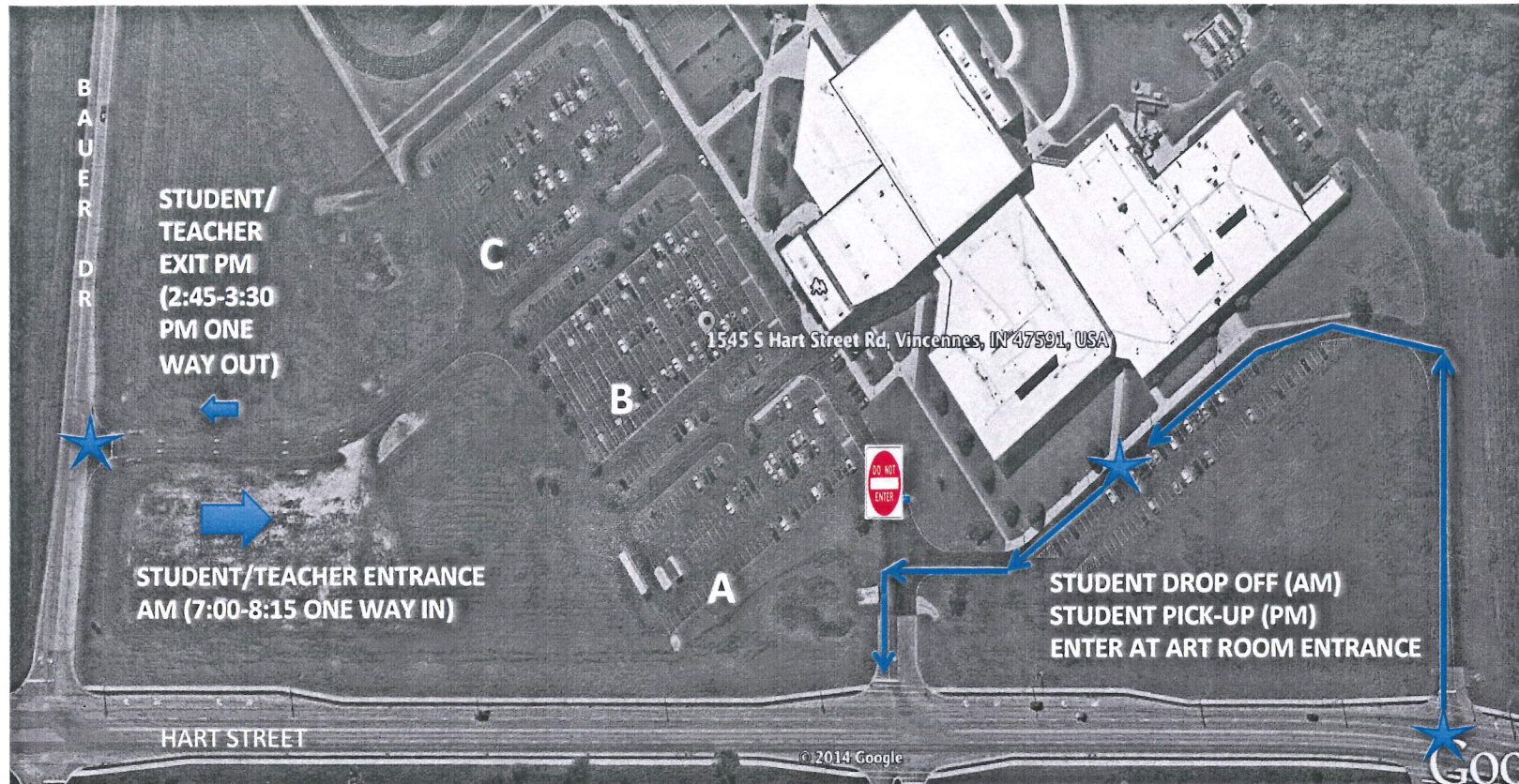


## LHS TRAFFIC FLOW PATTERN 2014-2015



1. Anyone parking at LHS between 7:00 and 8:15 AM needs to enter from Bauer Road with the teachers and students.
2. Parents please drop off students at the second sidewalk outside of the Art room on the Hart Street side.
3. Parents please pick-up students in the same (Hart Street) lot at the end of school (3:15). Parking spots will be available.
4. The road directly in front of LHS will be barricaded daily between 7:00-8:15 AM and 2:45-3:30 PM.